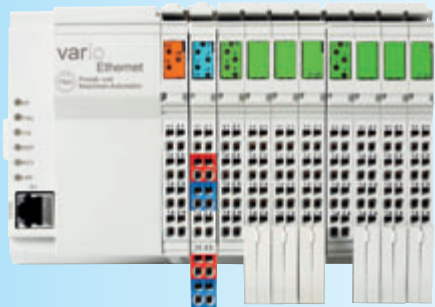
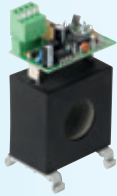
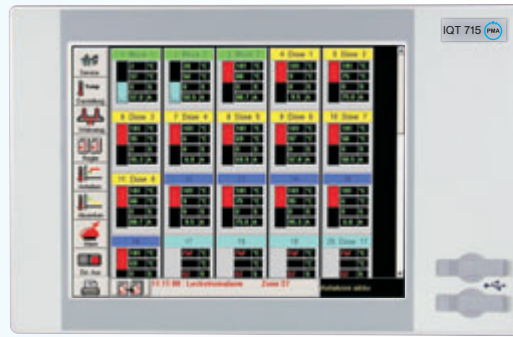


PMA components for HRC solutions

PMA supplies:

- Controllers
- Solid-state relays
- Current transformers
- PC terminals
- Software for complete systems



**Controllers from PMA:
Practice-oriented and reliable**

PMA technology and know-how is available directly from PMA, from one of our worldwide sales partners, or from hot-runner and mould manufacturers. Simply ask us!



PMA Prozeß- und Maschinen-Automation GmbH
Miramstraße 87
34123 Kassel/Germany
Tel./Fax: +49 (0) 561 505-1307/-1661
E-mail: mailbox@pma-online.de
www.pma-online.de

Hot-Runner Control

Any number of zones under control!



G050463 10/2007

*Wir kriegen's geregelt
Close the loop with PMA*



Hot-runner control

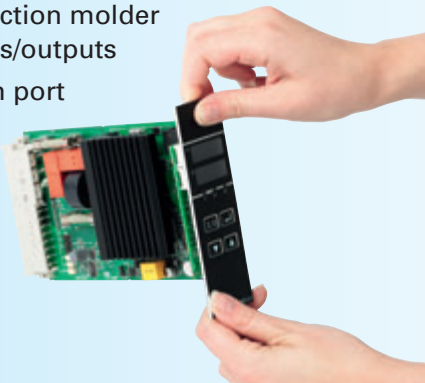
Any number of zones under control ...



With single-loop controller modules for 1 ... 32 zones ...

HRCslot

- Easy-to-operate plug-in controllers
- 16 A output, two fuses
- Automatic tuning to loop characteristics
- Automatic start-up function
- Boost function
- Standby function
- Alarms for
 - temperature tolerance band
 - heating current
 - short-circuited SSR
- Emergency operation in case of sensor break
- Interface to injection molder via digital inputs/outputs
- Communication port (Modbus)



... with display screen ...

HRCvario_{mini}

- Touch displays in two formats
- Transparent controller operation
- Start-up, standby, and boost functions
- Controlled heat-up
- Automatic mold diagnosis
- Recipe storage
- USB port for external recipe storage



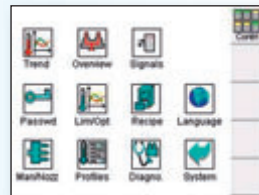
... fingertip operation:

HRC800

- Touch displays in many formats
- Clear menu structure
- Start-up, standby, and boost functions
- Automatic mold diagnosis
- Alarm reports
- Logbook function
- Comprehensive trend diagnostics
- Recipe storage
- Performance diagnosis
- Ethernet port for direct link into company network



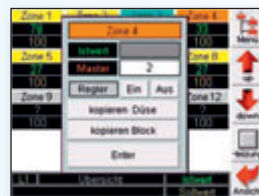
... from 8 zones up to 64 zones ...



Menu: Overview and selection per fingertip



Practice-oriented: various national languages

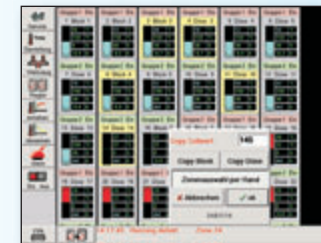


Select zone, and determine setpoint function



Diagnostics: Plain text about every zone status

... from 16 to more than 300 zones!



Fast overview, and operation of individual controllers



Group assignment, cooling channel monitor

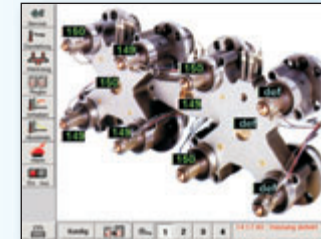
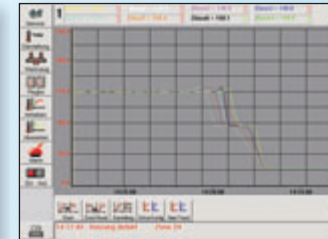


Photo-realistic zone operation



Trend curves for analysis and documentation